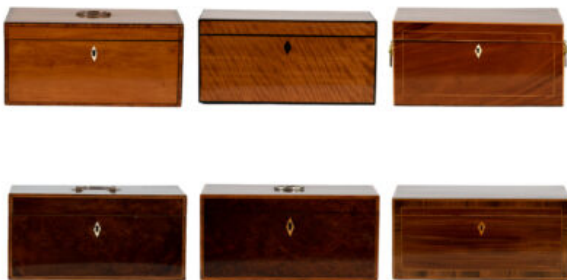




GARDEN COURT ANTIQUES

San Francisco, California  
415 355-1690

## Collection Of Six Early Regency Boxes Of Similar Shape And Size, English Circa 1800-1820.



List: \$10,500

An impressive collection of six early Regency boxes of similar shape and size, each with a kite-shaped bone escutcheon. The boxes are made of various woods, including burr walnut, burl yew, satinwood, flame birch, mahogany, and fruitwood. Each box also has a contrasting veneer along all outside edges, which is ebony, boxwood, or kingwood. Three of the boxes have decorative carrying handles, and three do not. French hand polish showcases the choice woods of these boxes. All of the boxes have working locks and keys. English circa 1800-1820.

height: 6 in. 15 cm., width: 12 in. 30 cm., depth: 6 in. 15 cm.

All boxes are approximately the same dimensions.

Sold as a set of six.

- Item Number: JG-431
- Country: England
- Period: Early 19th Century
- Creation Date: Circa 1800-1820

- Garden Court Antiques

: Fri Dec 20 11:50:27 2024 / +0000 GMT

- Materials: Birch, burr walnut, Fruitwood, Mahogany, Satinwood, yew
- Height: 15 cm., 6 in.
- Length: 12 in., 30 cm.
- Depth: 15 cm., 6 in.
- Condition: Very good
- Condition: very good condition; French polish; working lock and key; Sold as a set of six.